



# Business Presentation 2025

**NPQ**WER  
GENERATORS

**With over 20 years of experience, we deliver reliable and certified production using the world's best engines for solutions beyond the traditional. As we shape the future with our efficiency and sustainability-focused products, we invite you to empower your energy with us.**

**NPQWER**  
GENERATORS

# Portable Generator Sets

**NPPOWER**  
GENERATORS

## Gasoline Portable Generator Sets

## Diesel Portable Generator Sets

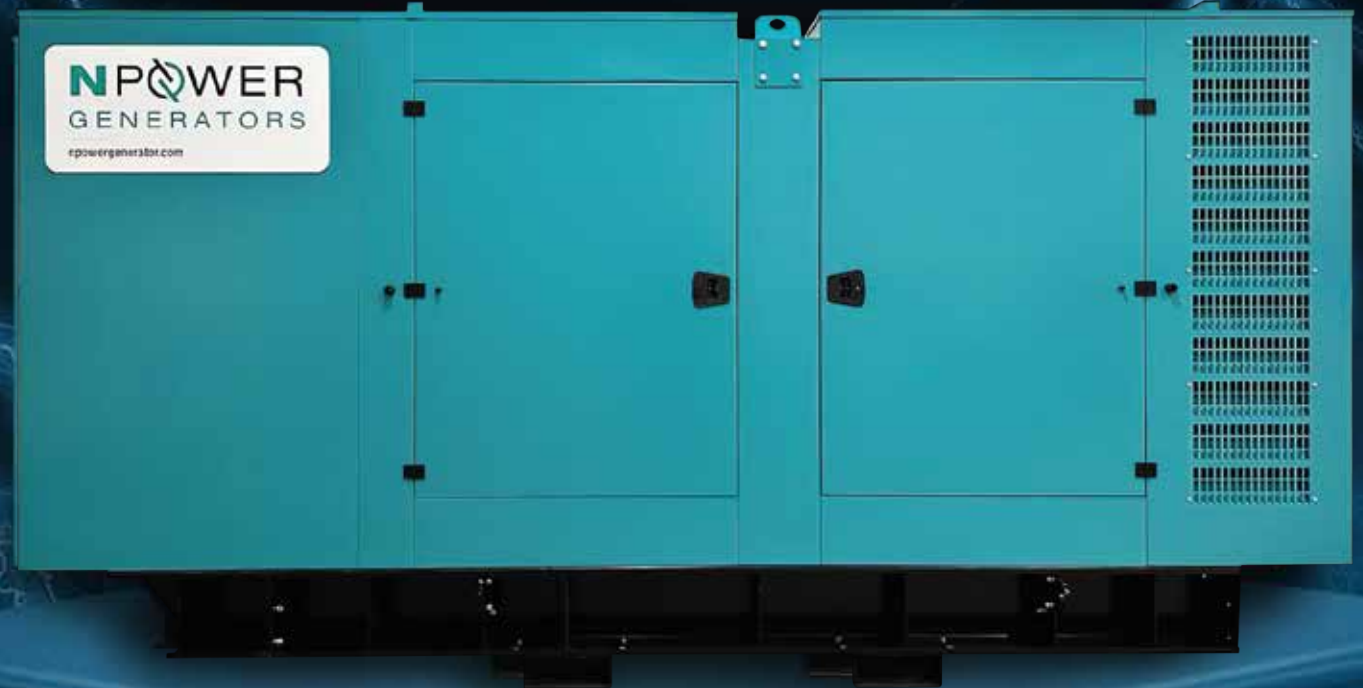
- 2,5 kVA - 15 kVA Generator Sets
- 50 - 60 Hz / 230 - 440 V Output
- Dual Fuel or Inverter Types
- Manuel or Electric Start Type
- Open or Sound Proof Canopy
- Automatic Transfer Panel



# Diesel Generator Sets

## Low Voltage Diesel Generator Sets

- 10 kVA - 4500 kVA Diesel Generator Sets
- 50 - 60 Hz / 230 - 440 V Output
- Open Type
- Sound Proof Canopy
- Sound Proof Container



# Diesel Generator Sets

## Medium Voltage Diesel Generator Sets

- 500 kVA - 4500 kVA Diesel Generator Sets
- 50 - 60 HZ / 3300 - 15300 VAC Output
- Open Type
- Sound Proof Canopy
- Sound Proof Container



# Diesel Generator Sets

**NPQWER**  
GENERATORS

## Eco Series Generator Sets

- 10 kVA – 4500 kVA Diesel Generator Sets
- 50 - 60 Hz / 230 - 440 V Output
- Open Type
- Sound Proof Canopy
- Sound Proof Containers



# Diesel Generator Sets

**NPOWER**  
GENERATORS

## Premium Series Generator Sets

- 10 kVA – 4500 kVA Diesel Generator Sets
- 50 - 60 Hz / 230 - 440 V Output
- Open Type
- Sound Proof Canopy
- Sound Proof Containers



# Natural Gas Generators

## Gas Generator Sets

- 30 kWe - 2000 kWe Gas Generator Sets
- 50 - 60 Hz / 230 - 440 V Output
- Open Type
- Sound Proof Canopy
- Sound Proof Container





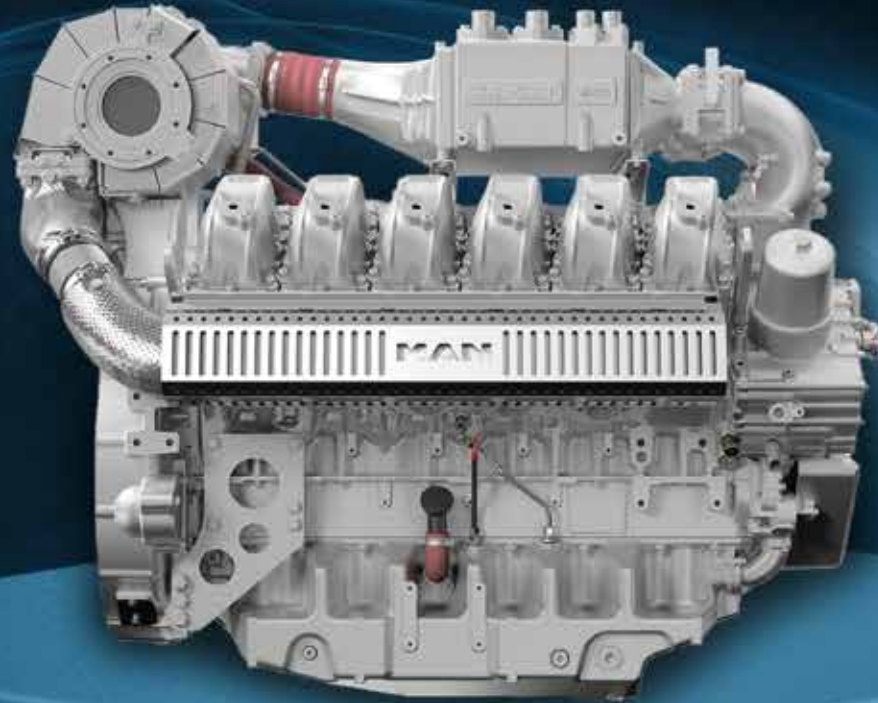
# Natural Gas Generators

**NPQWER**  
GENERATORS



## Gas Generator Sets

- 30 kWe - 700 kWe Gas Generator Sets
- 50 - 60 Hz / 230 - 440 V Output
- Open Type
- Sound Proof Canopy
- Sound Proof Container



# Natural Gas Generators



## Gas Generator Sets

- 100 kWe - 280 kWe Gas Generator Sets
- 50 - 60 Hz / 230 - 440 V Output
- Open Type
- Sound Proof Canopy
- Sound Proof Container



# Natural Gas Generators



## Gas Generator Sets

- 1000 kWe - 2000 kWe Gas Generator Sets
- 50 - 60 Hz / 230 - 440 V / 3,3-11 kV Output
- Open Type
- Sound Proof Canopy
- Sound Proof Container



# Natural Gas Generators

## Medium Voltage Gas Generator Sets

- 500 kWe - 4500 kWe Gas Generator Sets
- 50 - 60 HZ / 3300 - 15300 VAC Output
- Open Type ,
- Sound Proof Canopy
- Sound Proof Container



# Natural Gas Turbines

## Natural Gas Turbine Sets

- 2 MWe -600 MWe Gas Turbine Sets
- 50 - 60 HZ / 3300 - 15300 VAC Output
- Onshore , Offshore, Industrial
- Sound Proof Canopy
- Sound Proof Container



# HFO / LFO Generators

## Fuel Oil Generator Sets

### Medium Voltage HFO Generator Sets

- 500 kVA - 20.000 kVA HFO Generator Sets
- 50 - 60 HZ / 3300 - 15300 VAC Output
- Open Type
- Sound Proof Canopy
- Sound Proof Container



# Power Plants

## Power Plants

- 500 kWe - 20.000 kWe Genset Power Range
- 10 MWe - 1.000 MWe Establishment
- Natural Gas / Biogas / Syngas Application
- HFO / LFO / Dual Fuel or H2 Application
- Land or Ship Installation



# Defence Industry

## Auxiliary Power Units (APU)

- 6 kWe up 30 kWe Output Power
- DC or AC Different Voltage Levels
- Air or Water Cooled Type Engines
- Applicable to All Landbase Vehicle Operations





# Customized Projects

## Rotary Frequency Converter

- 100 kWe up 10 MWe Output Power
- 50 / 60 Hz Converting All Voltage Levels
- Air or Water Cooled Type  
Electric Motors Driven
- Air or Water Cooled Type Alternator
- Work Under All Site Condition Design
- Available for Military,  
Airport, Refinery or others



# Steam Turbines

## Condensing Steam Turbines

- Straight Condensing Type
  - Bleed Condensing Type
  - Extraction Condensing Type
  - Double Extraction Condensing
  - Injection Condensing Type
  - Axial Turbines
  - Reheat Turbines
- 
- Power Generation Capacity: Up to 100 MWe
  - Steam Inlet Temperature: Up to 545 C
  - Steam Inlet Pressure: Up to 140 Bar



# Steam Turbines

## Back Pressure Steam Turbines

- Straight Back Pressure Type
  - Bleed Back Pressure Type
  - Extraction Back Pressure Type
- 
- Power Generation Capacity: Up to 100 MWe
  - Steam Inlet Temperature: Up to 545 C
  - Steam Inlet Pressure: Up to 140 Bar



# Hybrid Power Plant

## All Power Source Combining and works together

- Diesel Genset
- Gas Genset
- HFO/LFO Genset
- Steam Turbine
- Battery Storage
- Solar Panels
- Wind Turbines
- Fuel Cells



# Mobile Power Station

Mobile Power Station

- Transformer with MV & LV Panels
- Diesel Generator
- Natural Gas Generator



# E - House Application

**NPQWER**  
GENERATOR

Mobilize Power Sytem

Transformer with MV & LV Panels

Diesel Generator

Natural Gas Generator

MV Protection Panels

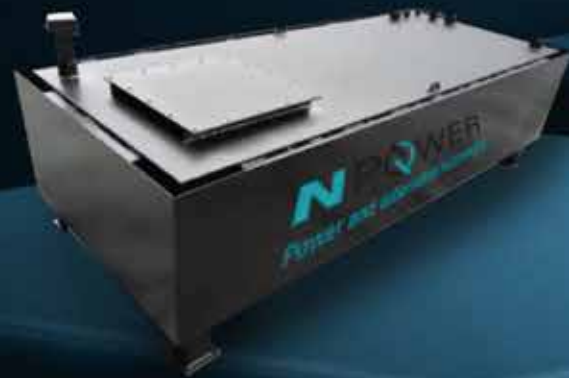
LV Distribution Panels



# Equipment

## Fuel Tanks and Fuel Automation

- Cubical Fuel Tanks
- Cylindrical Fuel Tanks
- Fuel Tank Automation



# Equipment

## Low Voltage Products

- Circuit Breakers
- Residual Current Devices
- Drivers
- Soft Starters
- Wiring Products





# Equipment

## Low Voltage Panels



Equipment

**SIEMENS**

Medium Voltage Panels

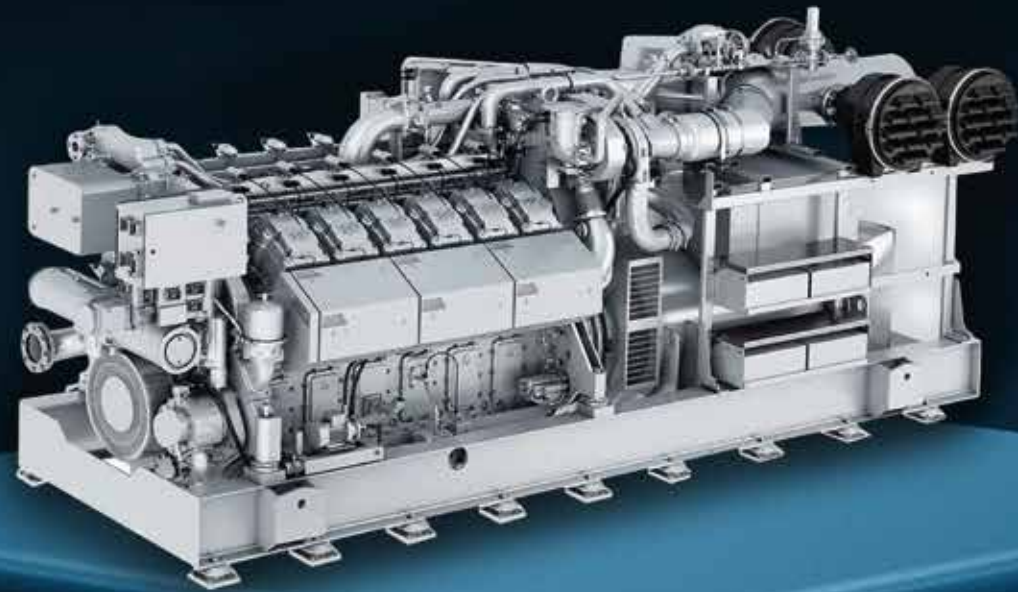
or other international brands

**NPOWER**  
GENERATORS



# References

- Heavy Industries
- Airports
- Data Centers
- Skyscrapers
- Petroleum Refineries
- Cement Industry
- Shopping Centers
- Residential Places
- Governmental Building



# References

**Plant Type:** Diesel Power Plant

**Plant Power:** 10.000 kVA

**Genset Voltage:** 6.000 VAC

**Genset Power :** 2.500 kVA

**Genset Quantity:** 4

**Engine Brand:** Perkins

**Alternator Brand:** Leroy Somer



# References

**Plant Type:** Diesel Power Plant

**Plant Power:** 18.000 kVA

**Genset Voltage:** 6.600 VAC

**Genset Power:** 2.250 kVA

**Genset Quantity:** 8

**Engine Brand:** Perkins

**Alternator Brand:** Stamford



# References

**Plant Type:** Diesel Power Plant

**Plant Power:** 6.700 kVA

**Genset Voltage:** 400 VAC

**Genset Power:** 1.675 kVA

**Genset Quantity:** 4

**Engine Brand:** Cummins

**Alternator Brand:** Stamford



# References

**Plant Type:** Gas Power Plant

**Plant Power:** 36.000 kWe

**Genset Voltage:** 6.000 VAC

**Genset Power:** 4.500 kWe (COP)

**Genset Quantity:** 8

**Engine Brand:** MWM

**Alternator Brand:** Marelli



# References

**Plant Type:** Gas Power Plant

**Plant Power:** 17.200 kWe

**Genset Voltage:** 6.600 VAC

**Genset Power:** 4.300 kWe (COP)

**Genset Quantity:** 4

**Engine Brand:** MWM

**Alternator Brand:** Tdps





# TÜRKİYE

# AZERBAIJAN



## İZMİR OFİS / MÜHENDİSLİK

Folkart Towers  
Bayraklı/İZMİR/TÜRKİYE  
+90 533 677 40 69

## FABRİKA

Kısıkköy / İZMİR/TÜRKİYE  
+90 531 461 83 83

## GENEL MÜDÜRLÜK MERKEZ ANA OFİS VE SHOWROOM

Yeni Mahalle Mah. Mimar Sinan Bulvarı No:122/A  
Yunusemre/MANİSA/TÜRKİYE

+90 236 237 56 56

+90 539 765 84 84

## BAKÜ SHOWROOM

AZERBAIJAN  
+994 50 508 63 64  
+994 50 791 84 85

## AYDIN ŞUBE

İzmir Bulvarı No:40/A  
+90 555 804 32 38

**YENİKAZANCI KLİMA MÜHENDİSLİK ve DIŞ TİCARET LTD. ŞTİ.**

[www.yenikazancimuhendislik.com](http://www.yenikazancimuhendislik.com)

0 850 840 09 09

[www.yenikazanciklima.com](http://www.yenikazanciklima.com)